

www.hoggi.de

Made in Germany
SWINGBO
by HOGGI 

SWINGBO



System - Wheelchair for kids



• Ti Models with 45° Tilt

SWINGBO



SWINGBO-S

SWINGBO-STi

SWINGBO-V

SWINGBO-VTi

SWINGBO - the innovative dispensing approach

The **SWINGBO** System-wheelchair for kids allows you to supply kids with self propelled light weight active wheelchairs in their early years. In order to meet the needs of parents who prefer a buggy some buggy elements are integrated into the **SWINGBO**:

- Adjustable push handle
- Adjustable seat depth and backrest height for growth
- Tilt in space (variation **Ti**)
- Foot rest construction with hangers mounted to the seat
- Foot rest system adjustable to accommodate knee angles more or less than 90°
- Foot rest angle adjustable, foldable, also with optional heel stop
- Angle adjustable backrest also folds onto seat
- Optional large front wheels for all terrain use

For each seat width approximately 7cm of seat depth and 6cm of backrest height adjustment are possible.

SWINGBO - innovative seat angle adjustment & frame variations

The **SWINGBO** System-wheelchair offers two frame variations to meet the demands of many supply needs. **SWINGBO-S** above axle frame, slim design for seat height from 38 cm - 48 cm.

SWINGBO-V below axle frame with 4 cm wider abduction for seat heights from 35 - 45 cm.

With the **SWINGBO** System-wheelchair for kids it is possible to adjust the seat angle independent of the base on an active self propelled wheelchair. The multifunction unit that joins frame, rear axle and seat unit and adjusts seat angle, overall base length and seat height.

SWINGBO S und V Self propelled active wheelchair for kids with adjustment of seat angle from -5° to +15°

SWINGBO STi und VTi Self propelled active wheelchair for kids with variable seat angle from -5° to +45°

SWINGBO - frame colours

Traffic yellow

Flamered

Sky blue

Yellow-green

Grey aluminum

HOGGI[®] - Partnering together to mobilise kids

SWINGBO

SWINGBO - the modular conception

In order to supply the **SWINGBO** to meet the needs of individual kids the chair is made with a modular construction system.

Mobility base, seat unit and footrest systems can be purchased separately. For this reason there are a huge number of possible configurations available: From completely standardized mobility base and complete seat unit with assembled seat and backrest upholstery, to partly individualized and completely individualized with a **SWINGBO** mobility base and a completely customized seat pan.

The seat unit is made of shaped flat aluminum for a firm adjustable surface to create positioning to meet individual needs. These are made up of seat and backrest supports and aluminum pans for the seat and back surfaces.

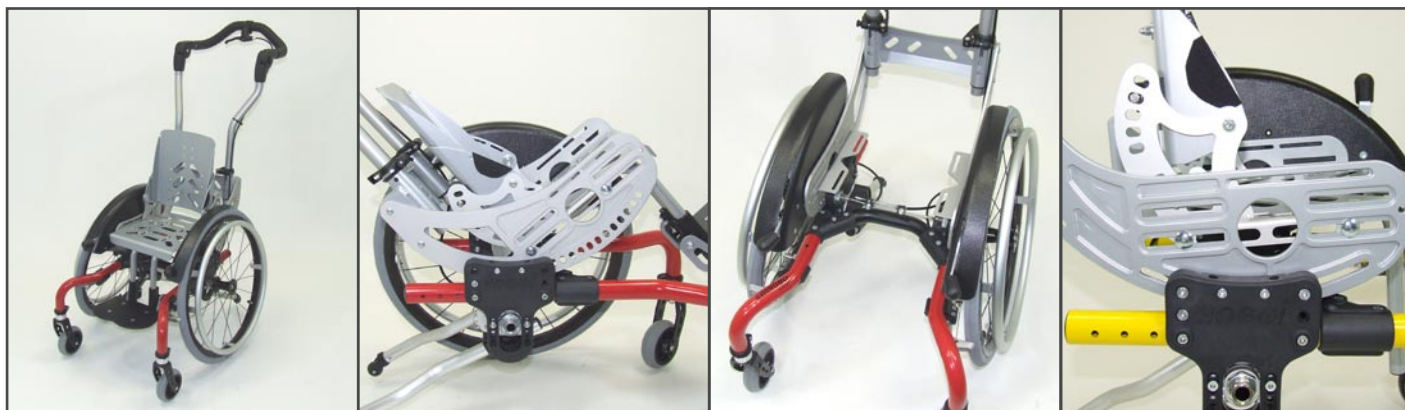
The modular construction makes it possible to grow the chair in width as well as switch from self propelled active variations (**SWINGBO-S** and **SWINGBO-V**) to the tilt in space variations (**SWINGBO-STi** and **SWINGBO-VTi**).

The **SWINGBO** offers solutions for growth and possible changing needs associated with progressive medical diagnoses.

SWINGBO - the active wheelchair

The essential preconditions for active riding are:

- The ideal positioning of the user (shoulder axis above axis of drive wheel) in relation to the rear wheel. Therefore the **SWINGBO** seat unit is mounted in the seat adapter plates and can be moved within the slots to adjust the center of gravity of the wheelchair to make it more active or passive.
- Independently adjustable seat angle. The adjustment of the seat angle is completed using the multifunction unit that is designed so that the pivot is close to the center of gravity. This allows the seat angle to be adjusted without moving the centre of gravity.
- Adjustable backrest angle in increments from 70°-120°.
- Light weight wheelchair. The **SWINGBO** was designed with light weight always under special consideration. With a weight of approx. 9,7 kg (seat width 24) the **SWINGBO** with growth adaptation compares with many other self propelled active wheelchairs with no growth options. The weight advantage is even more considerable with the **SWINGBO-Ti** when compared to other tilt in space wheelchairs. The **SWINGBO-Ti** weighs approx. 12 kg (seat width 24).



SWINGBO

SWINGBO - accessories



Knee angle system 90°

Knee angle system:
Adjustable 85° - 160°

Foot rest bracket with
interlocking

Foot rest

Foot rest with heel stop



Seat cushion

Back cushion with
lateral cushions

Push handle unit

Push bar

Single push handle



Armrests with PU pads

Therapie tray

Transparent spoke guard

Push-rim cover in
silicone black fluted

Anti tip



Headrest standard:
With cushion

Universal headrest
bracket

Headrest with occiput
upholstery

Ankle hugger

Lap belt



4-point lap belt

Chest-/thoracic support

Trunk supports

Wheel base extension

SWINGBO - wheels & hand rims



Rear wheel HOGGI light with pneumatic tires 20", 22" and 24"

Rear wheel with drum brake 20", 22" and 24"

Front castor with solid rubber tires 100x32, 125x32 and 140x40

Skater wheel with illuminating diode 100x24 and 125x24

PU front castor with design aluminum rim 100x32 and 125x32



Rear wheel with PU tires 20", 22" and 24"

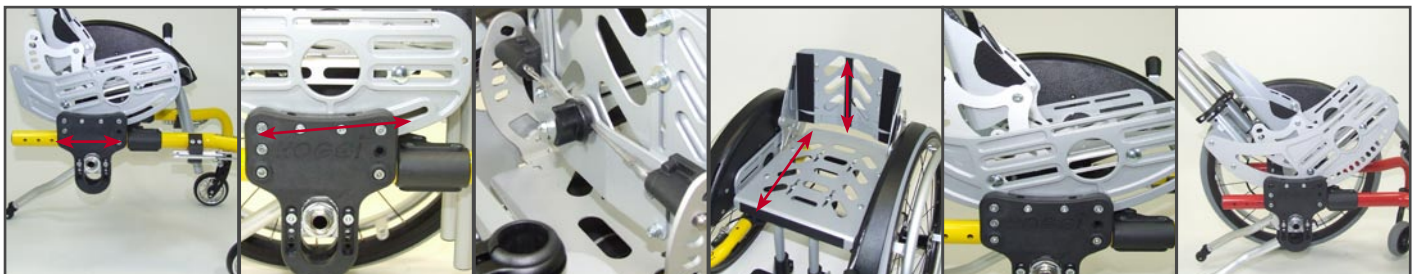
Stainless steel hand rim

Aluminum hand rim

Hand rim diameter: Standard

Hand rim diameter: High

SWINGBO - adjustment & positioning possibilities



Wheel base adjustment

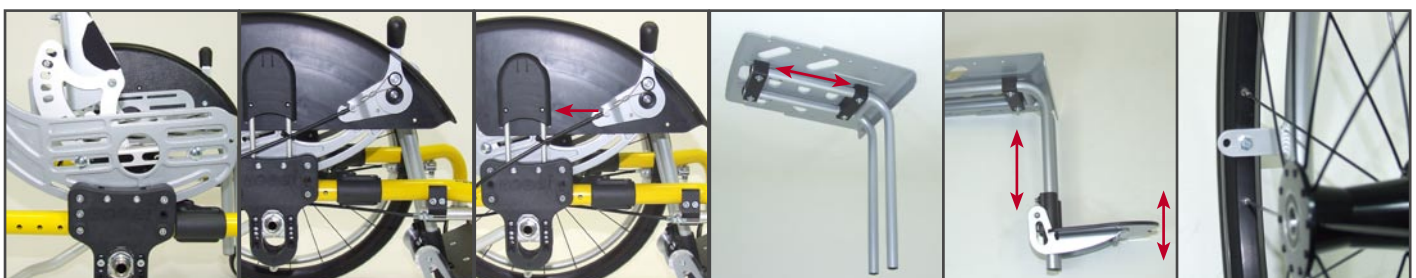
Seating position

Backrest angle

Backrest height and seat depth

Seat angle model: S and V

Seat angle model: STi and VTi



Seat height

Wheel lock lever integrated in wheel guards

Height adjustable wheel guards

Knee angle positioning

Lower leg length and footrest angle

Hand rim mounted „tight“ or „wide“

Dimensions (cm) & weights (kg)

	18	20	22	24	26	28	30	32	34
Seat width									
Seat depth									
Short panel	19-23	19-25	21-28	23-30	25-32	27-35	29-37	31-39	33-41
Long panel	21-26	21-28	24-31	26-33	29-36	32-40	34-42	36-44	38-46
Backrest height									
Short	21-27	21-27	21-27	21-27	21-27	26-33	26-33	26-33	26-33
Long	25-31	27-33	29-35	31-37	33-39	35-41	37-43	39-45	41-47
Seat angle									
Model S u. V	-5° to +15° (continuously)								
Model STi +VTi	-7° to + 45° (in 4° steps adjustable)								
Backrest angle	adjustable in 10° steps from 75°-115° or 80°-120°								
Lower leg length	13 - 36								
Footrest angle	-10° to + 10°								
Seat height									
Model S u. STi	38 - 48								
Seat height									
Model V u. VTi	35 - 45								
Rear wheel diameter	20", 22", 24"								
Front castor diameter	100 mm (4"), 125 mm (5"), 140 mm (5,5")								
Wheel base	33,5 / 36 / 38,5 / 41								
Camber	6° or 9°								
Weight	SWINGBO-S seat width 24, 20" rear wheel, 100 mm skate wheel = 9,7 SWINGBO-VTi seat width 24, 20" rear wheel, 100 mm skate wheel = 12								
Load capacity	50								
Turning radius	max. 100								

SWINGBO details

- Rigid frame active wheelchair with fixed castor housing; growth adaption for seat depth and backrest height
- 2 mobility base variants: **SWINGBO-S, SWINGBO-V**
- 2 seat angle variants:
 - adjustable (-5° to +15°) for **SWINGBO-S** and **SWINGBO-V**
 - variable (-7° to +45°) for **SWINGBO-STi** and **SWINGBO-VTi**
- Convertible: to other seat widths and other mobility base and seat angle variants
- Wheel base: adjustable in 2,5 cm steps from 33,5 cm to 41 cm
- Wheel locks: Bowden cable system; operation lever integrated in wheel guards
- Rear wheels: 20", 22" and 24" HOGGI light wheels with quick release axles, drum brake optional
- Hand rims: aluminum or stainless steel, standard or high, tight or wide
- Wheel camber: selectively 6° or 9°
- Front castors: choice from diverse types and sizes
- Backrest angle: adjustable in 10° steps from 75° - 115° or 80° - 120°, foldable onto seat
- Seat height: adjustable
- Seating position: continuously adjustable in relation to rear axle within 6 cm
- Footrest system:
 - adjustable to accommodate knee angles more or less than 90°
 - optional angle adjustable 85 - 160°
 - footrest adjustable in height and angle, flip up type
 - 2 footrest variants (flat or with heel stop)

HOGGI®

Partnering together to mobilise kids

HOGGI GmbH • Taunusstr. 17 • D-56235 Ransbach-Baumbach • Internet: www.hoggi.de
E-mail: info@hoggi.de • Telefon: (+49) 2623 / 92 499-0 • Telefax: (+49) 2623 / 92 499-99